



M SERIES

Advanced thermal imaging camera
with full function analysis



VISIT OUR WEBSITE

Professional Handheld Thermal Imaging Camera for Versatile Applications



Interchangeable
Battery System



Complete Image
Annotations



Rugged &
Durable Design



1 Level & Span



Image Modes



Laser Pointer

Manual Focus

Adjusting the manual focus ring allows to see objects clearly on targets as close as 0.1 m (0.33 ft) and still capture sharp images and more accurate results from further away. (M11W, M20W features a focus-free lens.)

WHAT'S IN THE BOX



OPTIONAL ACCESSORIES



Additional
batteries
E097-13-1S1P26650



Pouch
HM-SP01-POUCH



Replacement
Charger
HM-5202ZC



Bracket
HM-AHBR03

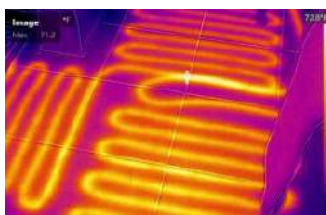


Micro Lens
HM-AHL02-MM650

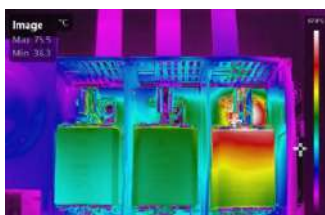
APPLICATIONS



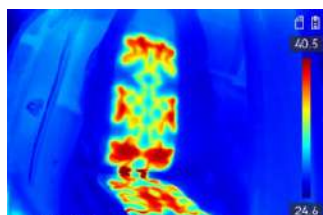
Building Insulation



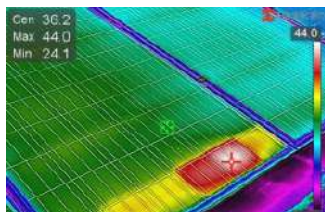
In Floor Heating



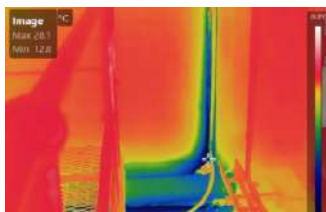
Electrical Cabinet



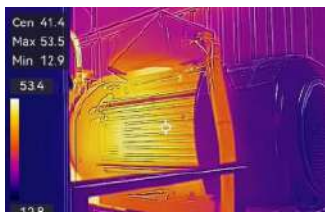
Automotive



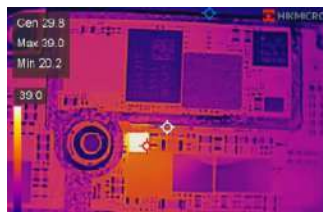
Solar Panel



Freezer Room



Mechanical



PCB



HIKMICRO Viewer

Connect HIKMICRO Viewer app via Wi-Fi to transfer photos or videos from camera to mobile device.



HIKIMICRO Analyzer

Compatible with files from HIKMICRO cameras, providing the features you need to simplify your workflow and increase your productivity.

Precise, Flexible, Stable Microscope Stand

Paired with a macro lens, it transforms into a thermal imaging microscope suitable for scenarios requiring temperature observation of tiny details. Connect with HIKMICRO Analyzers for real-time viewing and analysis.



Model No	M11	M11W	M20W	M20	M31	M60
IR Resolution	192 × 144 (27,648 pixels)	192 × 144 (27,648 pixels)	256 x 192 (49,152 pixels)	256 x 192 (49,152 pixels)	384 x 288 (110,592 pixels)	640 x 480 (307,200 pixels)
SuperIR	192 × 144 (27,648 pixels)	192 × 144 (27,648 pixels)	512 × 384 (196,608 pixels)	512 × 384 (196,608 pixels)	768 × 576 (442,368 pixels)	1280 × 960 (1,228,800 pixels)
NETD	< 40 mK (@ 25 °C, F#=1.0)				< 30 mK (@ 25 °C, F#=1.0)	< 35 mK (@ 25 °C, F#=1.0)
Focal Length	6.9mm	3.6mm	3.5mm	6.9mm	6.4 mm	15mm
FOV	18.8° × 14.1°	37.2° x 27.8°	50° x 37.2°	25° x 18.8°	41.1°×30.5°	41.9° × 33.3°
Focus	Manual Focus	Focus Free	Focus Free	Manual Focus	Manual Focus	Manual Focus
Visual Camera	3264 × 2448 (8 MP)					
Min. Focusing Distance	0.1 m (0.33 ft)	0.5 m (1.64 ft)	0.5 m (1.64 ft)	0.1 m (0.33 ft)	0.1 m (0.32 ft)	0.3 m (0.98 ft)
Object Temp. Range	-20 °C to 550 °C (-4 °F to 1022 °F)				-20 °C to 650 °C (-4 °F to 1202 °F)	
Accuracy	Max. (± 2°C/3.6°F, ± 2%), for ambient temperature 15°C to 35°C (59°F to 95°F) and object temperature above 0°C (32°F)					
Wi-Fi	802.11 b/g/n (2.4 GHz and 5 GHz)					
Storage	Default Storage: Removable SD Card (16 GB) ; Max. Storage Capacity: 128 GB				Default Storage: Removable SD Card (64 GB) Max. Storage Capacity: 128 GB	
Battery Operating Time	Approx. 6 hours x 2	Approx. 6 hours x 2	Approx. 6 hours x 2	Approx. 6 hours x 2	Approx. 4 hours x 2	Approx. 4 hours x 2